



2426 HAMBURGE TURNPIKE ♦ WAYNE, NEW JERSEY ♦ 07470 ♦ (201) 988-5551

Curriculum for Derma Couture Permanent Cosmetics Clinic and Training Center Primary Training Program

The following information covers the curriculum of Derma Couture's permanent cosmetics primary training program.

Sanitation/Sterilization... keeping you and your clients safe.

- Blood Borne Pathogens Test (www.probloodborne.com)
- Avoiding Cross-Contamination
- OSHA Guidelines to environmental control
- Table set up and break down
- Proper housecleaning and disinfecting
- Sterilization guidelines



Skin Anatomy

- Layers of dermis and epidermis
- Understanding depth of pigment placement
- Expected healing process of procedures
- Disorders that prevent permanent makeup procedures



Color Theory

- Fitzpatrick Scale and its relation to color response
- Understanding color response to depth and degree of melanin (color) in the skin
- Determining undertones of warm and cool complexions

Equipment

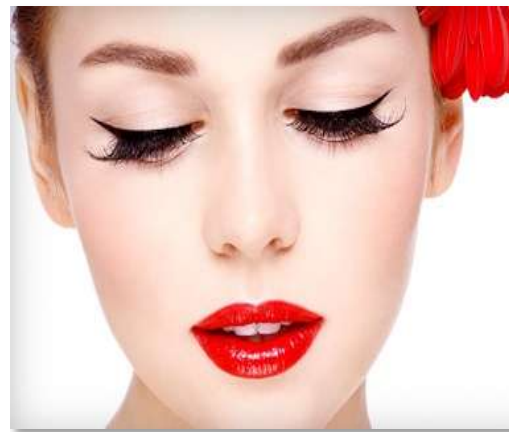
- Various types of equipment
- Assembly and disassembly
- Proper occlusion of equipment and cleaning

Needle Selection

- Understanding of various needle configurations
- Selection of needles for various effects such as: hair simulation, shading, soft powdery finishes, etc.

Facial Morphology and Eyebrow Design

- Distinguishing various facial shapes
- Eyebrow designs using CPR technique that flatter each facial shape
- Eyebrow drawing on live models.





Client Forms

- Pre-procedure questions
- Medical history forms...learn when you require medical clearance
- Informed consent
- Post care instructions
- Model release



Client Consultation

- How to conduct a good consultation and client evaluation
- Identifying client expectations
- Obtaining medical clearance
- Drawing on each procedure

Eye Anatomy

- Identifying areas of the eyes that pertain to permanent makeup
- Identifying areas of the eyes where you can place color and where you cannot
- Proper closed eye stretching techniques for safe application
- Eyeliner design to flatter each client's eyes





2426 HAMBURGE TURNPIKE ♦ WAYNE, NEW JERSEY ♦ 07470 ♦ (201) 988-5551

Lip Shaping and Color Blend

- Following CPR guidelines, learn to shape the most flattering lips



Mannequin Practice

- Application of each procedure is first performed on your mannequin

Pigment Removal Using Salt and Saline

- Demonstration of salt and saline safe pigment removal.

There will be demonstrations of all procedures prior to trainee applications on their live models. Trainees will see and perform a minimum of 2 of each: eyebrow procedures utilizing hair simulation, eyeliner and "Gloss and Go" lip lining with shaded blend. Class size is limited to 4 trainees.



2426 HAMBURGE TURNPIKE ♦ WAYNE, NEW JERSEY ♦ 07470 ♦ (201) 988-5551

Marketing and General Business:

- Insurance selection
- Benefits of forming an LLC
- Branding yourself (how do you wish to present yourself to the world), logo design
- Cross Marketing
- Cheap and effective advertising
- Getting editorial...identifying what is newsworthy

